

ELITE SENERJI

BUILDING WITH SYNERGY



PARK REST RESORT



ELITE SENERJI





“

**BUILDING
WITH
SYNERGY**

”



ABOUT ELITE SENERJI

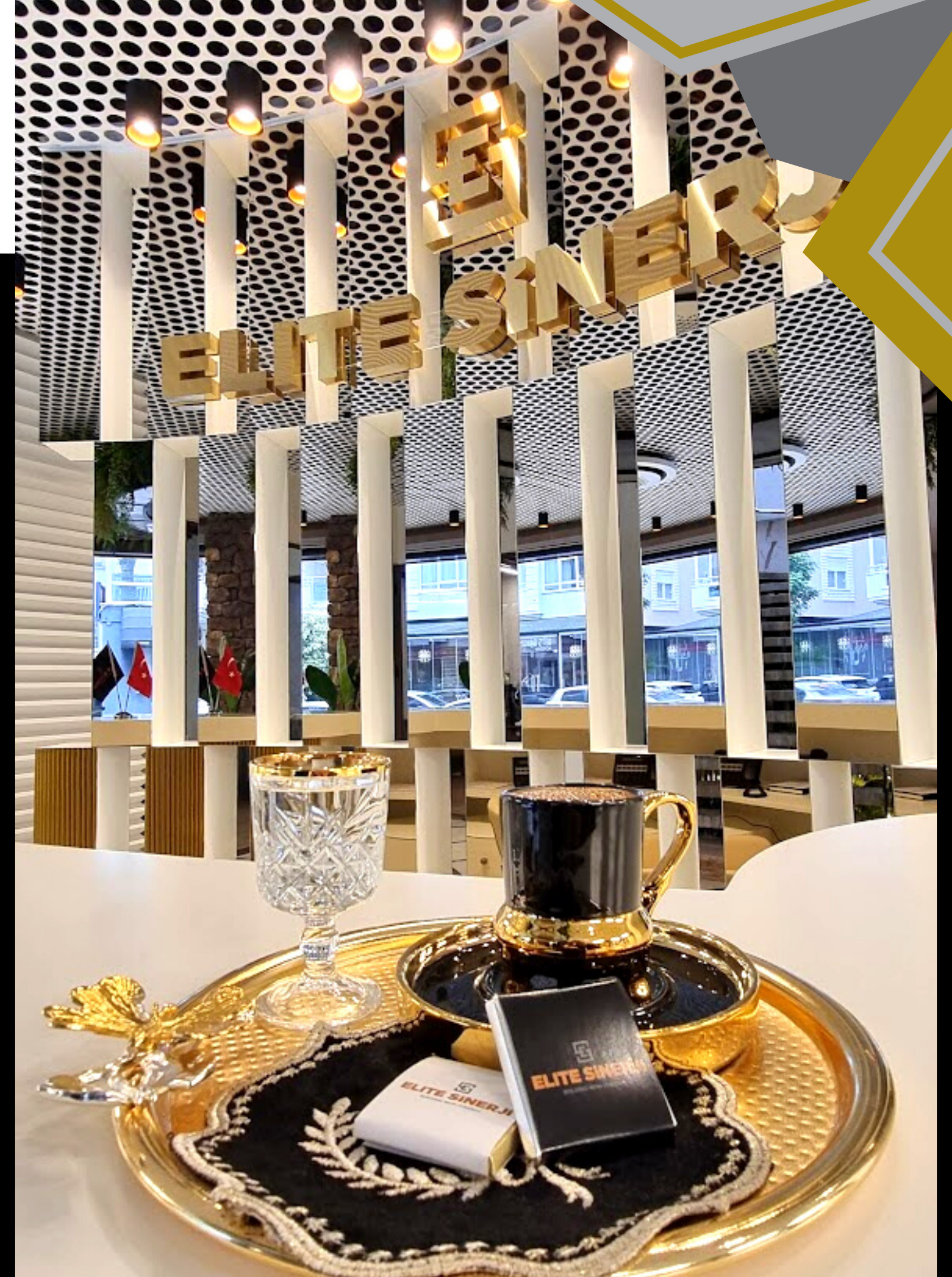
Elite Sinerji Construction is a construction and investment company with many years of experience in luxury real estate in Turkey.

Elite Sinerji Construction is a co-founder and co-owner of the Elite Group Company in Turkey.

In our work, we adhere to the principles of trust, customer focus, quality and professionalism in order to help our investors and clients to be happy owners of luxury real estate or earn profit by investing their finances in the construction of luxury residential real estate on the coast of Antalya in Turkey.

Today, Elite Sinerji construction has an extensive network of its representative offices and business partners not only in Turkey, but also in countries such as Germany, Belgium, Finland, Dubai, England, Czech Republic, Kazakhstan and Sweden.

Our company regularly participates in International real estate exhibitions along with other world's leading construction companies.

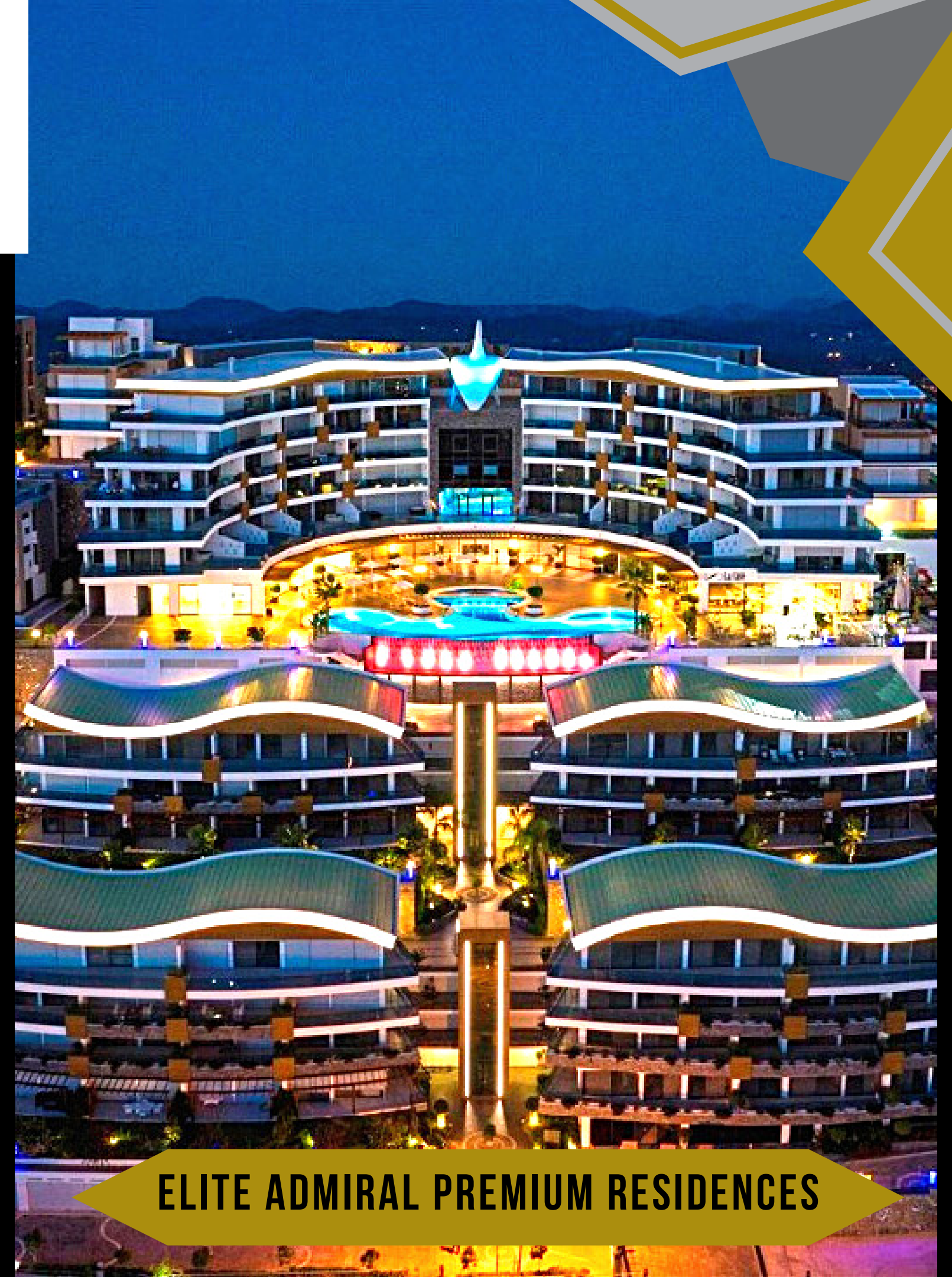


ABOUT ELITE SENERJI

We occupy a leading position in the real estate sector on the coast of Antalya. Elite Sinerji construction has been building quality luxury residential properties for 30 years.

Each project is being created with the aim of providing not only a place to live, but also the highest possible comfort combined with sophistication and aesthetics.

One of our projects, Elite Admiral Premium Residences, has become a source of inspiration for many other construction companies and set new quality standards in the field of construction and tourism.



ELITE ADMIRAL PREMIUM RESIDENCES

NORTH CYPRUS

LOCATION

Turkish Republic of Northern Cyprus

Located 65 km south of Turkey, the Turkish Republic of Northern Cyprus is the 3rd largest island in the Mediterranean. Ercan International Airport is only recognized as a legal airport by Turkey. The capital is Nicosia and the most important settlements are Iskele, Guzelyurt, Famagusta, Kyrenia.

The official language is Turkish.

The Mediterranean climate is dominant and therefore does not receive much precipitation. Hot and arid climate prevails.

The territory of the Republic extends to Güzelyurt in the west, Akıncılar in the south and Dipkarpaz in the north. The region is under the control of the United Nations as a buffer zone between the territory of the Republic of Cyprus and the Turkish Republic of Northern Cyprus.

Economy

The economy of the Turkish Republic of Northern Cyprus consists mainly of the service sector, including the public sector, trade, education and tourism, with small agricultural and light manufacturing sectors. Tourism and education are the lifeblood of the economy.

Places to visit in the Turkish Republic of Northern Cyprus

There are 85 natural caves in the northern part of the island. The main ones are stalagmites, stalactites and pearl cave.

Turkish Cypriot cuisine is similar to Turkish and Greek cuisines. Goat cheese halloumi fries, jam or fruit candies, pilavuna dishes, peach kebab can be given as examples. Cypriot cuisine reflects its own maritime culture and history, while at the same time synthesizing western and eastern cultures.

The old city center of Nicosia is surrounded by a total of 5.5 km of city wall and is still intact. The gate at the entrance was built by the Ottomans. There are many places to visit along the east coast and the ancient city of Salamis. The Karpaz peninsula, a spawning ground for green turtles, has special areas and is off limits.

Venetian column, Kyrenia gate, Nicosia, Kyrenia castle, Kyrenia old harbor, Selimiye Mosque, Green Line, Bellapais Monastery, Famagusta city and harbor, Kertikli bath, St. Barnabas Monastery, Namık Kemal Museum, Salamis Ruins, Lala Mustafa Pasha Mosque, Othello Castle are among the places to visit.

There are more than 25 casinos, 250 restaurants and over 100 3-4-5 star hotels in the Turkish Republic of Northern Cyprus.



LEFKE



Lefke

Lefke is a town in Cyprus, overlooking Morphou Bay. In 2011, the town proper had 3,009 inhabitants. It is the capital of the Lefke District of Northern Cyprus, having been a sub-district centre in the Güzelyurt District until the establishment of the district in 2016. Lefke is known for its citrus fruits and copper mines.

Lefka contains numerous historical houses that are in the Cypriot-Ottoman architectural style. Most of these houses were built between 1900 and 1930, and while they are mainly in the Ottoman architectural style, they feature elements of Greek architecture, such as Ionian columns, as well. This indicates the fact that many of these houses were built by Greek Cypriot builders. The houses have characteristic bay windows and arches in the interior. They all have inner courtyards, reflecting the conservative, closed Islamic family life of the early 20th century. They lie along narrow, unspoiled streets; the most impressive mansions are located in the Nekipzade, Hacı Emin and Salih Suphi streets.

Climate / Weather

The Mediterranean climate with hot and humid summers, when temperatures can reach 40 degrees, is observed in Lefke. The winter months are generally mild, with occasional rain, and snowless, making the tourism season last very long - you can take a swim in Lefke until November or even December. Temperatures are also high in the spring months, with an average temperature of 25 degrees, therefore May and June are ideal for sightseeing.

How to get there

There is only one airport in the Turkish Republic of Northern Cyprus, Ercan Airport in Nicosia. To reach the airport, you can use the shuttle buses called KIBHAS, or rent a car and take a taxi. The distance from Ercan Airport to Lefke is 66 km.

Flights to Nicosia are operated not only from Istanbul but also from Ankara, Izmir, Antalya, Adana, Hatay and other cities. There are also ferry services from Alanya and 2-hours Mersin Taşucu. Turkish citizens can go to Cyprus with their identity cards.



DESCRIPTION

249

Apartments

13

FLOORS

LOCAL TRANSPORTATION LINKS

66 KM

GİRNE CENTER



50 M

BEACH



77 KM

ERCAN AIRPORT

6 KM

EUROPEAN UNIVERSITY













PROJECT PORTFOLIO

TYPE OF APARTMENTS

66 km to the Girne center
6 km the European University
50 meters to the beach
1 hour drive to the Nicosia (Ercan) Airport

249 Apartments

1 + 0 Studio

1 + 1

2 + 1

Indoor & outdoor swimming pool

Children 's pool

Air conditioners in every room

Sauna & Turkish Bath (Hamam)

CCTV Cameras

Video intercom

Mini-Club

Fitness















PICTURES OF THE PROJECT





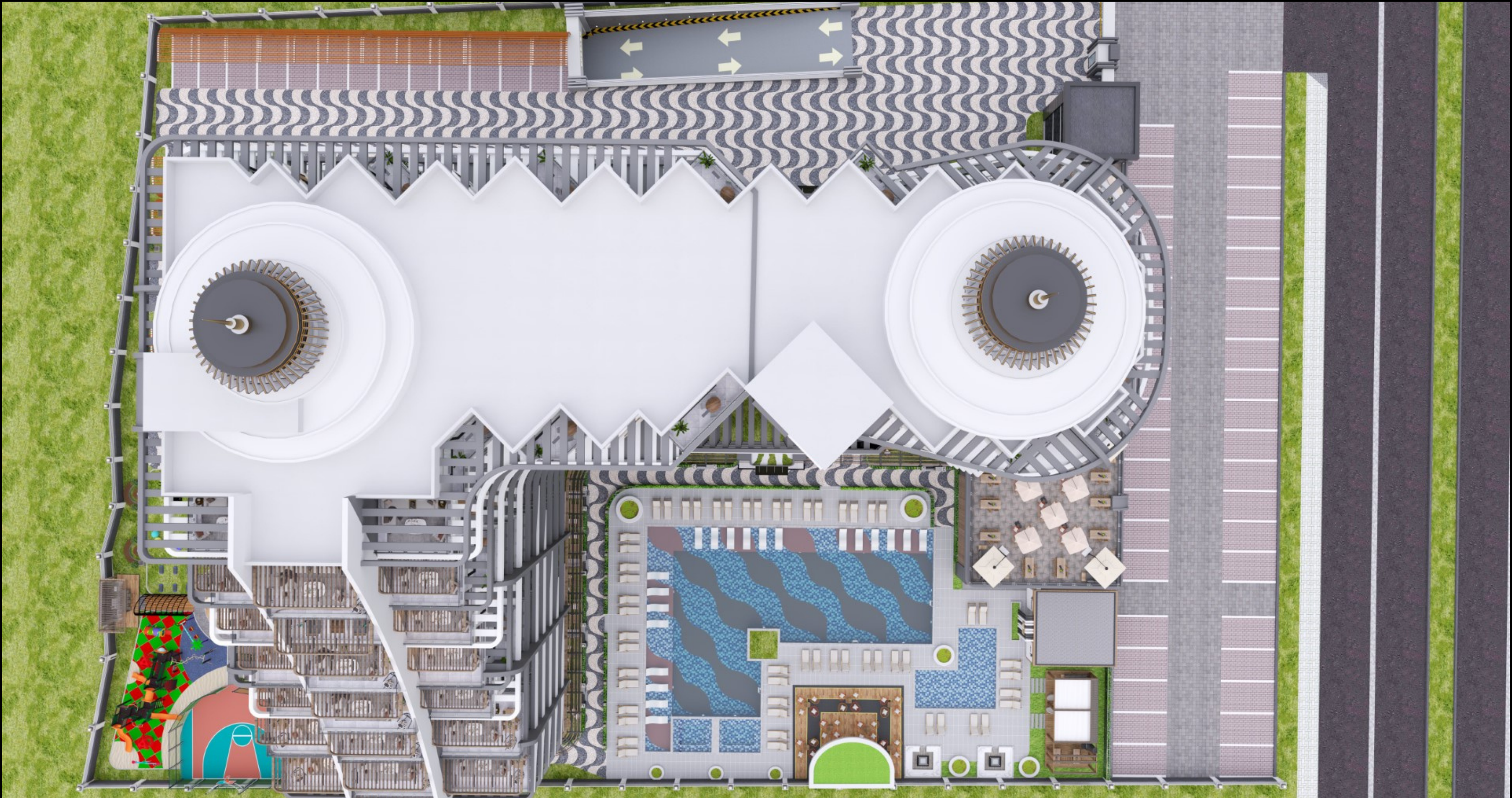
































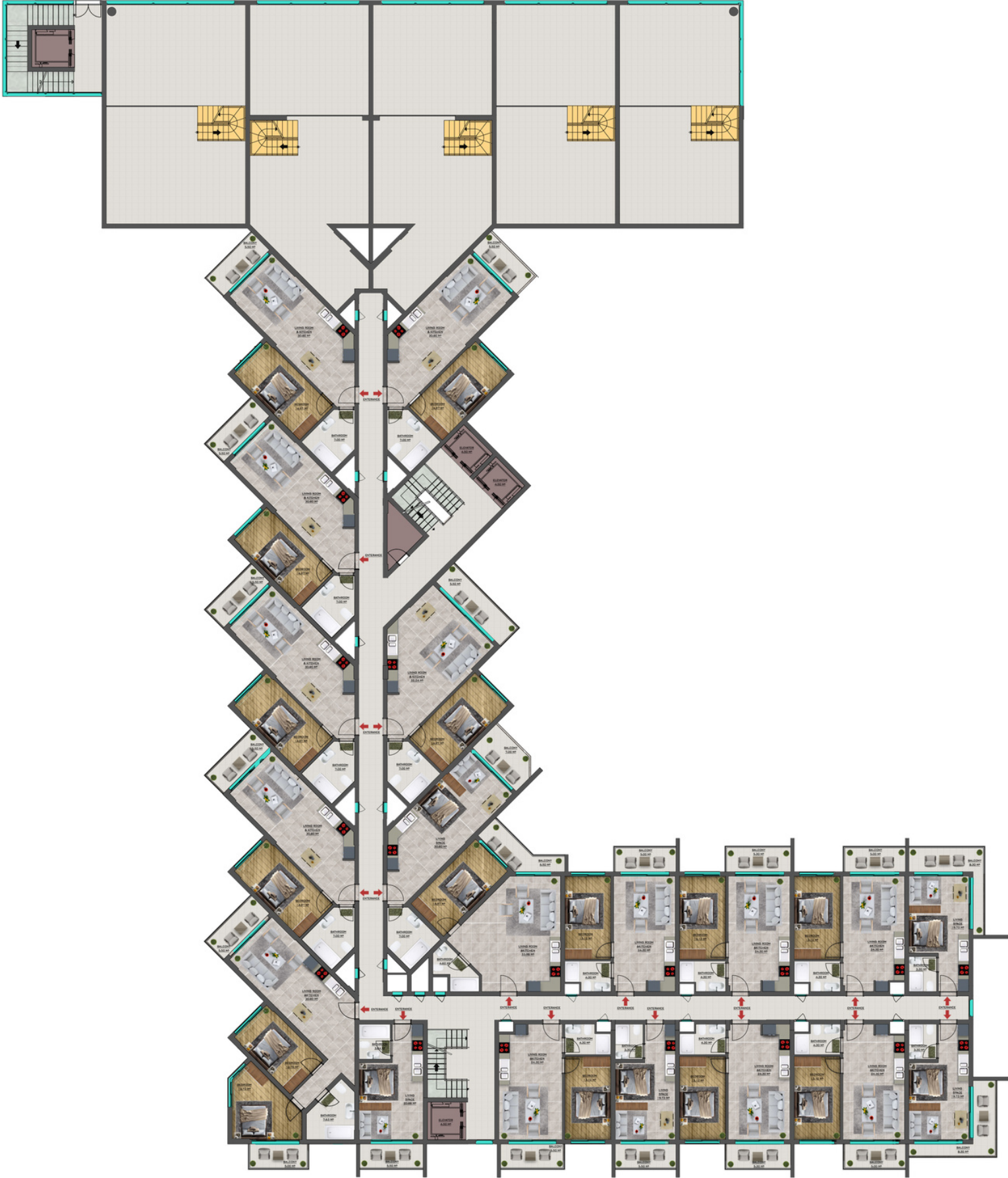
FLOOR PLANS

GROUND FLOOR PLAN



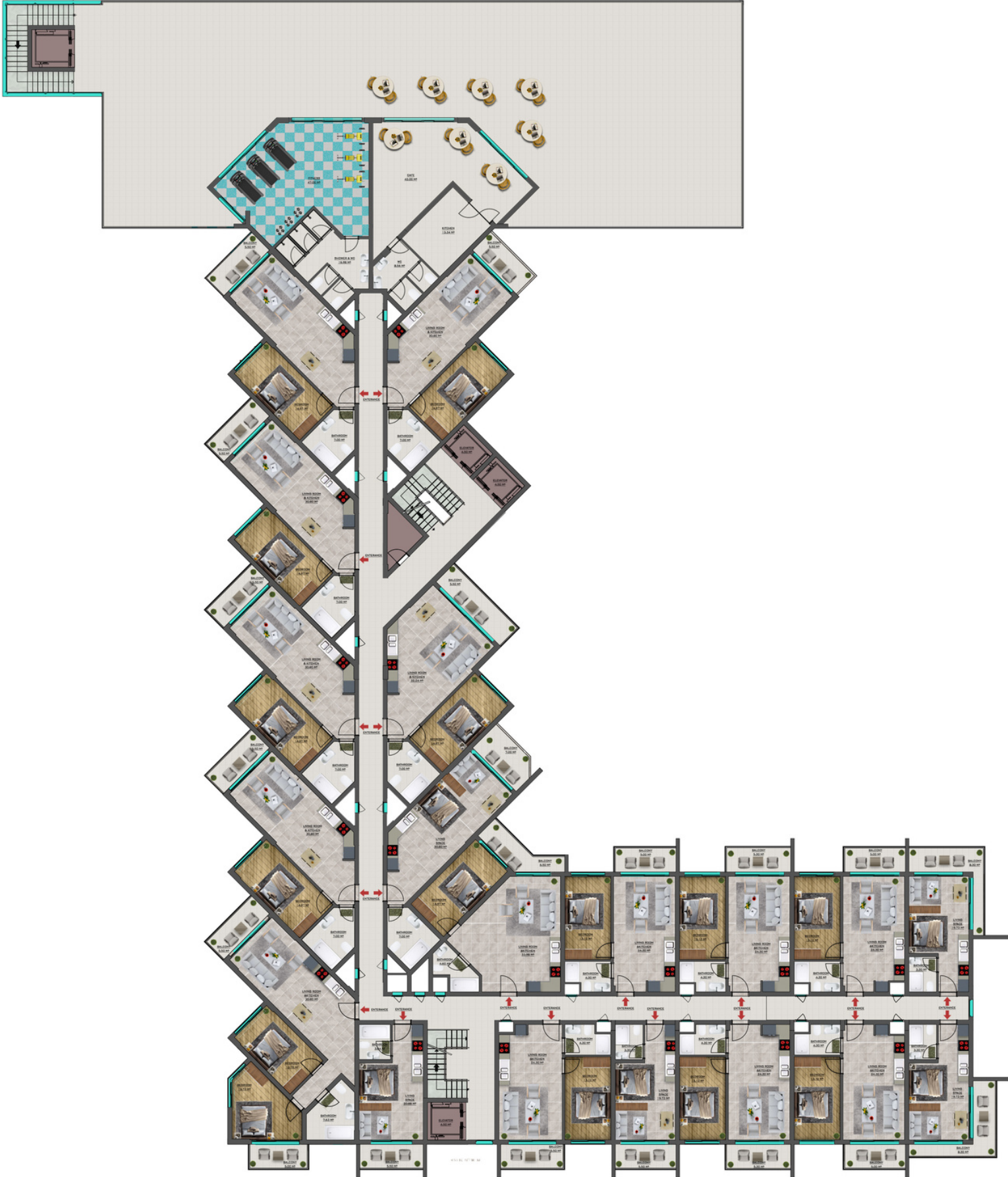
FLOOR PLANS

FIRST FLOOR PLAN



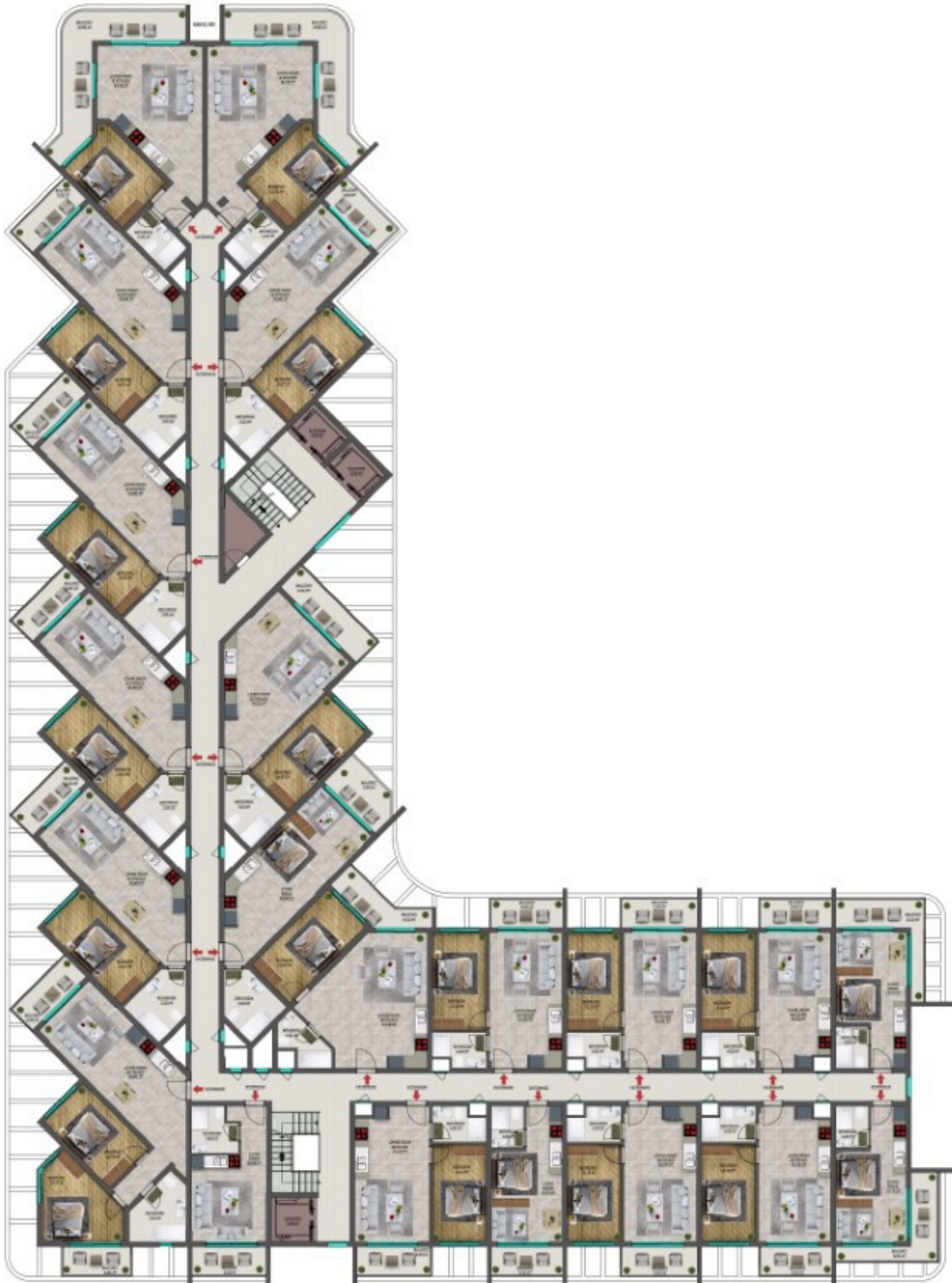
FLOOR PLANS

SECOND FLOOR PLAN



FLOOR PLANS

3.-6. FLOOR P1



FLOOR PLANS

SEVENTH FLOOR PLAN



FLOOR PLANS

EIGHTH FLOOR PLAN



FLOOR PLANS

NINTH FLOOR PLAN



FLOOR PLANS

TENTH FLOOR PLAN



FLOOR PLANS

ELEVENTH FLOOR PLAN



FLOOR PLANS

TWELFTH FLOOR PLAN



FLOOR PLANS

THIRTEENTH FLOOR PLAN





ELITE SENERJI

BUILDING WITH SYNERGY

www.elitesinerji.com

info@elitesinerji.com

+90 242 212 04 04

